

MCC MINIATURE COMPRESSION LOAD CELL (U.S. & METRIC)

FEATURES & BENEFITS

- Proprietary Interface temperature compensated strain gages
- Performance to 0.10%
- Low height – 1.12 in (28.3 mm)
- 0.002%/°F temp. effect on output

SPECIFICATIONS

ACCURACY – (MAX ERROR)		
Nonlinearity – %FS		±0.10
Hysteresis – %FS		±0.10
Nonrepeatability – %RO		±0.05
Creep, in 20 min – %		±0.05
TEMPERATURE		
Compensated Range	°F	15 to 115
	°C	-10 to 45
Operating Range	°F	65 to 200
	°C	-55 to 90
Effect On Output – % / deg	°F	±0.001
	°C	±0.002
Effect On Zero – %RO / deg	°F	±0.005
	°C	±0.009
ELECTRICAL		
Rated Output – mV/V (Nominal)		2.20 ± 0.20 Compression
Zero Balance – %RO		±2.0
Input Resistance – Ohm (Nominal)		350 +35 /-3.5
Output Resistance – Ohm (Nominal)		350 ± 3.5
Insulation Resistance – Megohm		5000
Excitation Voltage – VDC MAX		12
MECHANICAL		
Calibration		Compression
Safe Overload – %CAP		±150
Weight (with cable)	lb	0.05
	kg	0.02
Cable Length	ft	5
	m	1.5
Material		Aluminum

STANDARD CONFIGURATION



Model MCC-500N (Shown)

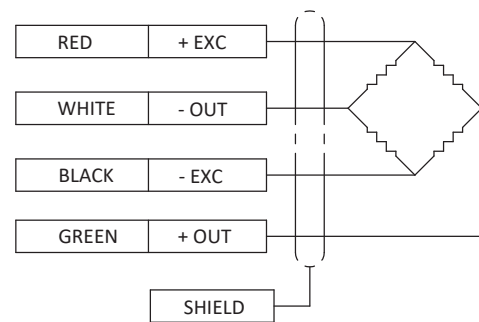
OPTIONS

- Cable length
- Standardized output
- Custom calibration
- Add connector to cable
- Special temperature range
- Transducer Electronic Data Sheet (TEDS)

ACCESSORIES

- Instrumentation

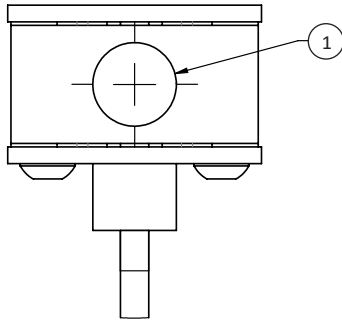
WIRING DIAGRAM



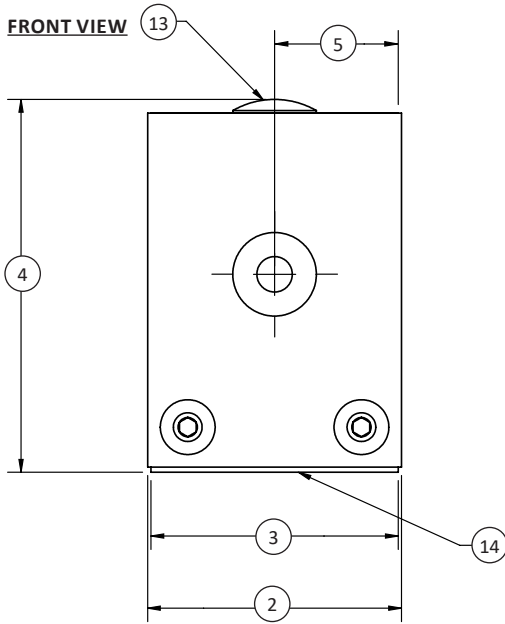
COMPRESSION UPSCALE

MCC MINIATURE COMPRESSION LOAD CELL (U.S. & METRIC)

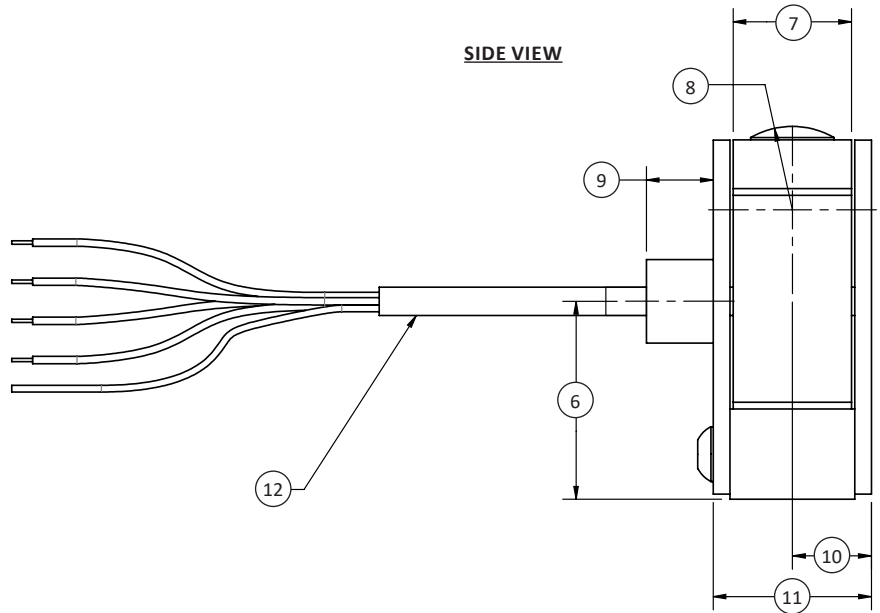
TOP VIEW



FRONT VIEW



SIDE VIEW



DIMENSIONS

See Drawing	CAPACITY	
	U.S. (lbf)	Metric (N)
	in	mm
(1)	Ø0.25	Ø6.4
(2)	0.76	19.3
(3)	0.74	18.8
(4)	1.12	28.3
(5)	0.37	9.4
(6)	0.59	15.0
(7)	0.35	9.0
(8)	SR 0.25	SR 6.4
(9)	0.20	5.1
(10)	0.24	6.0
(11)	0.47	12.0
(12)	0.08 O.D. 4 Conductor 30 Gage Shielded Cable	2.1 O.D. 4 Conductor 30 Gage Shielded Cable
(13)	ACTIVE END	
(14)	INACTIVE END	

MCC Mini v1.0 03-04-2021

International System of Units (SI) dimensions and capacities are provided for conversion only. Standard products have U.S. capacities and dimensions. SI capacities available upon special request and at an additional cost.