

AT105 CONTACTLESS FORCE/TORQUE TRANSDUCER (U.S. & METRIC)

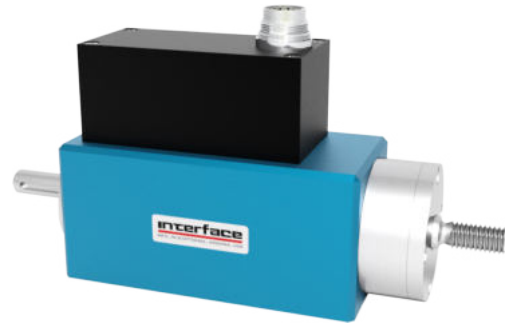
FEATURES & BENEFITS

- Capacities from 100/2, 250/5, & 500/5 N/Nm (22.5/17.7, 56.2/44.3, & 112.4/44.3 lbf/lbf-in)
- Contactless and digital signal transmission from rotor to stator
- Highly accurate
- Maintenance free
- Simple handling and assembly

SPECIFICATIONS

ACCURACY – (MAX ERROR)			
Capacities	100/2	250/5	500/5
Nonlinearity – Force %FS	± 0.4%		
Nonlinearity – Torque %FS	± 0.2		
Hysteresis – Torque %FS	± 0.2		
Nonrepeatability – %RO	± 0.1		
Crosstalk – %FS	< 1		
Creep, in 30 min – %	± 0.1		
TEMPERATURE			
Effect on Zero – %RO / deg	°C	± 0.2	
Effect on Output – % / deg	°C	± 0.1	
Compensated Range	°C	+5 to +45	
	°F	+41 to +113	
Operating Range	°C	0 to +60	
	°F	+32 to +140	
Storage Range	°C	-10 to +70	
	°F	+14 to +158	
ELECTRICAL			
Supply Voltage- VDC	12 - 28		
Supply Current – mA	≤ 60		
Output – V	±5V		
Electrical Connection	12-pin binder series 581		
Control signal excitation - V	L <2.0; H >3.5		
Sample Rate- kSample/s	10		
MECHANICAL			
Operating load (static)	150		
Limit load (static)	200		
Breaking load	>300		
Permissible oscillation stress	70 (peak to peak)		
IP Rating	IP50		
Weight	kg	1.3	
	lb	2.9	
Shaft Material	Alloy Steel		
Housing Material	Aluminum		

STANDARD CONFIGURATION

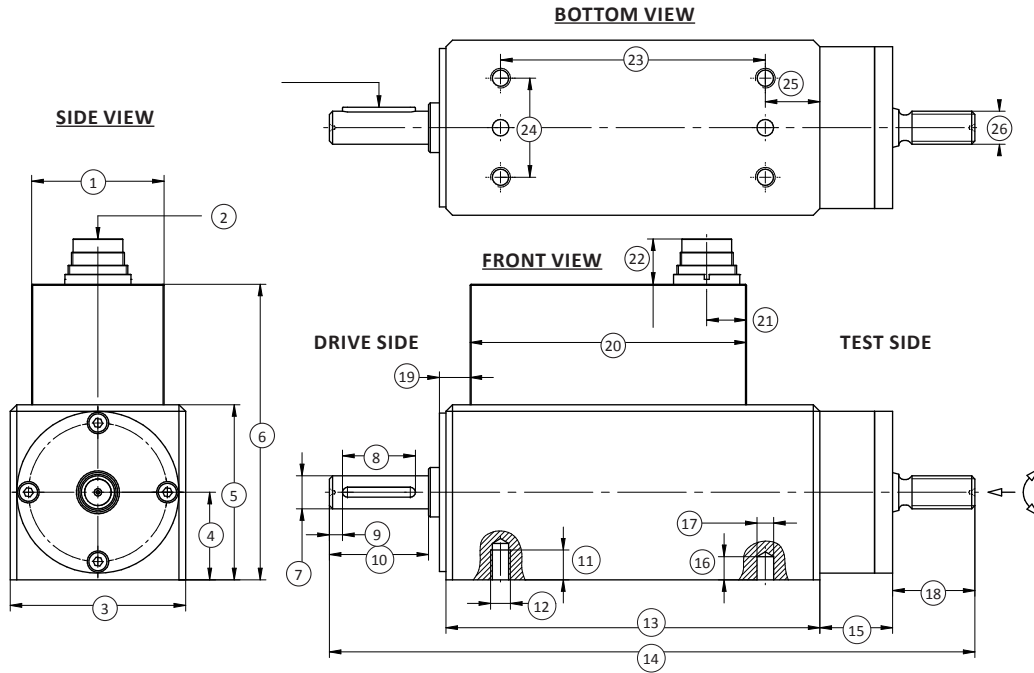


Model AT105 (Shown)

OPTIONS

- Active output ±5V (optional ±10V)
- Speed up to 3000 rpm
- Integrated speed/angle measurement optional
- Mating cable assembly
- Special versions on request

AT105 CONTACTLESS FORCE/TORQUE TRANSDUCER (U.S. & METRIC)



DIMENSIONS

See Drawing	Metric (N/Nm)	U.S. (lbf/lbf-in)
	100/2, 250/5, 500/5	22.5/17.7, 56.2/44.3, 112.4/44.3
	mm	in
(1)	40	1.6
(2)	Connector 12-pin	
(3)	53	2.1
(4)	26.5	1.04
(5)	53	2.1
(6)	89.5	3.52
(7)	Ø10h8	Ø10h8
(8)	22	0.9
(9)	4	0.2
(10)	30	1.2
(11)	11	0.4
(12)	4x M6	
(13)	113	4.44
(14)	195	7.67
(15)	22	0.9
(16)	7	0.3
(17)	Ø5h7	Ø5h7
(18)	25	0.98
(19)	9.5	0.4
(20)	83.5	3.29
(21)	12	0.5
(22)	~ 14	~ 0.6
(23)	80	3.1
(24)	30	1.2
(25)	16.5	0.65
(26)	M10	