

## PBLC3 PILLOW BLOCK LOAD BEARING LOAD CELL (U.S. & METRIC)

The PBLC3 Pillow Block Load Bearing Load Cell series has been developed to measure the force of a pillow block bearing. The force measurement is performed at this load cell between two supports. This force sensor is suitable for the measurement of forces under pillow block bearings and for the measurement of axle weight in test stands for trains and vehicles. Product is compatible with INA Pillow Block Bearings.

### FEATURES & BENEFITS

- Capacities from 50 to 100 kN (11.2K to 22.5K lbf)
- Compatible with INA pillow block bearings
- IP65 moisture protection
- Rugged electro-galvanized surface

### SPECIFICATIONS

ACCURACY – (MAX ERROR)		
Nonlinearity – %FS	0.1	
Hysteresis – %FS	0.1	
Creep %FS	0.1	
TEMPERATURE		
Compensated Range	°C	-10 to 70
	°F	14 to 158
Operating Range	°C	-10 to 85
	°F	14 to 185
Effect on Output % / deg	°C	0.02
Effect on Zero – %RO / deg		0.01
ELECTRICAL		
Rated Output – mV/V / FS	1	
Zero Balance – mV/V	0.05	
Bridge Resistance – Ohm	350	
Excitation Voltage – VDC MAX	10	
Insulation Resistance – Ohm	2 G	
MECHANICAL		
Calibration	Compression	
Safe Overload – lbf	150	
Material	Stainless Steel	
Cable Length	m	5
	ft	16.4

### STANDARD CONFIGURATION



Model PBLC-50kN-499 (Shown)

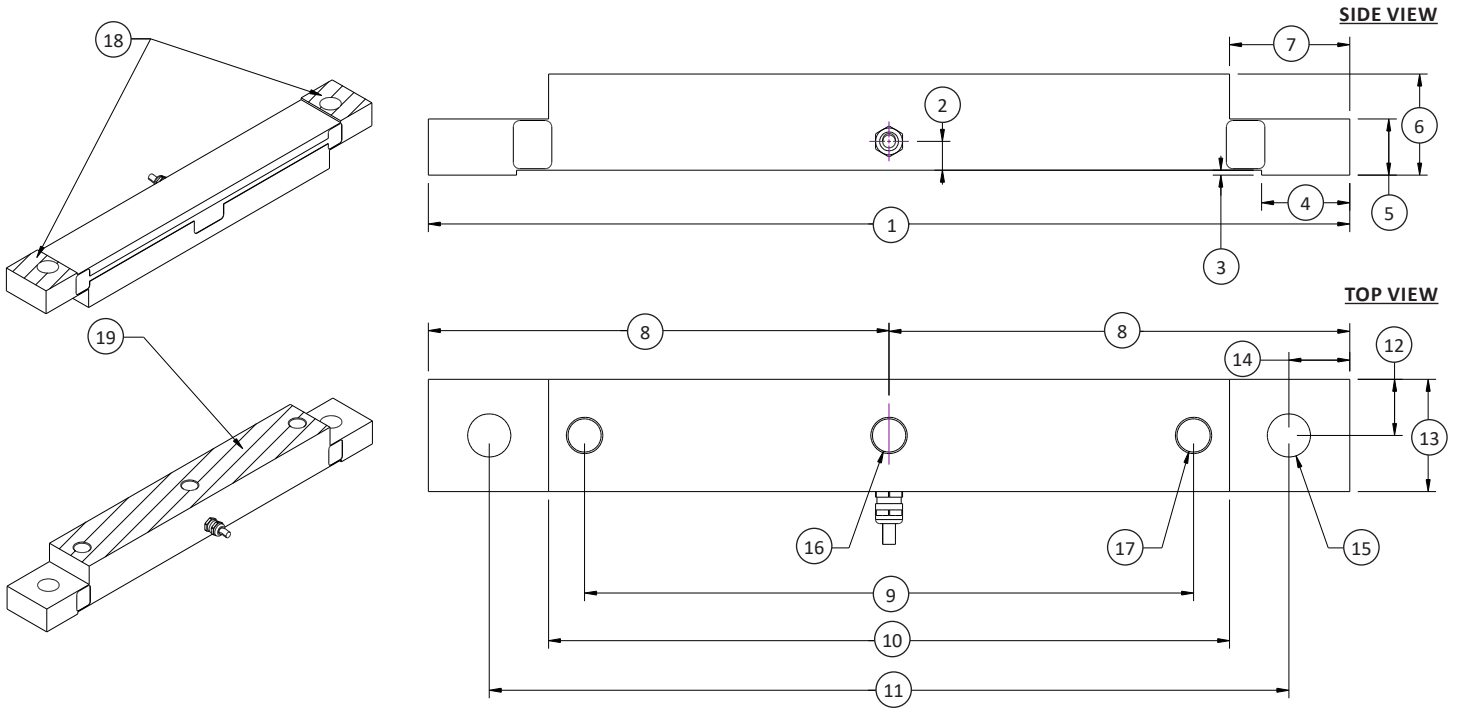
### ELECTRICAL

SYMBOL	DESCRIPTION	WIRE COLOR
+Us	Positive Bridge Supply	Brown
-Us	Negative Bridge Supply	White
+Ud	Positive Bridge Output	Green
-Ud	Negative Bridge Output	Yellow

### OPTIONS

- Optional 780 (+/-80) Ohm Configuration
- 2-Axis Option Available

## PBLC3 PILLOW BLOCK LOAD BEARING LOAD CELL (U.S. & METRIC)



### DIMENSIONS

See Drawing	CAPACITY			
	Metric (kN)	U.S. (lbf)	Metric (kN)	U.S. (lbf)
	mm	in	mm	in
(1)	575	22.64	575	22.64
(2)	18	0.71	18	0.71
(3)	3	0.12	3	0.12
(4)	55	2.17	55	2.17
(5)	35	1.38	35	1.38
(6)	63	2.48	63	2.48
(7)	75	2.95	75	2.95
(8)	287.5	11.32	287.5	11.32
(9)	350	13.78	380	14.96
(10)	425	16.73	425	16.73
(11)	499	19.65	499	19.65
(12)	35	1.38	35	1.38
(13)	70	2.76	70	2.76
(14)	38	1.50	38	1.50
(15)	2 x $\varnothing 27 \downarrow$	2 x $\varnothing 1.06 \downarrow$	2 x $\varnothing 27 \downarrow$	2 x $\varnothing 1.06 \downarrow$
(16)	M24x3 $\downarrow 32 \vee 118^\circ$	M24x3 $\downarrow 1.26 \vee 118^\circ$	M24x3 $\downarrow 32 \vee 118^\circ$	M24x3 $\downarrow 1.26 \vee 118^\circ$
(17)	2 x M24x3 $\downarrow 32 \vee 118^\circ$	2 x M24x3 $\downarrow 1.26 \vee 118^\circ$	2 x M24x3 $\downarrow 32 \vee 118^\circ$	2 x M24x3 $\downarrow 1.26 \vee 118^\circ$
(18)	Bolting Surface			
(19)	Bolting Surface / Measuring Platform			

PBLC3 v1.1 02-24-2023

U.S. dimensions and capacities are provided for conversion only. Standard products have International System of Units (SI) capacities and dimensions.