

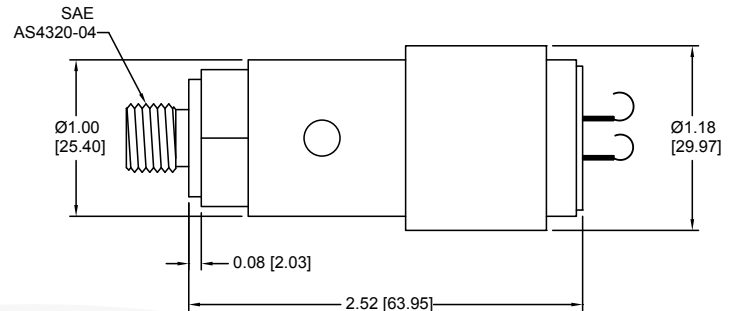
## MODEL 7500-M254

### ROV SUBSEA PRESSURE TRANSDUCER



**STANDARD WIRING**

PIN	MODEL 7500-M254
A/1	+EXC/SIG
B/2	N/C
C/3	N/C
D/4	-EXC/SIG
E/5	N/C



**REF DIMENSIONS ONLY.  
CONSULT FACTORY FOR ACTUAL DIMENSIONS.**

#### PRODUCT OVERVIEW:

The 7500-M254 from GP:50 is a subsea pressure transducer, designed for use within remote or unmanned vehicles. Its open reference provides for sea depth pressure. When used in a non-conductive fluid bladder, the transducer also provides a gauge process pressure. In addition to ROV applications, the compact size and sea rated construction of the 7500-M254 make it ideal for the effective monitoring of subsea oilfield wellhead control systems.

#### FEATURES:

- Subsea depth rated to 30K ft WC (9,144 meters)
- Differential design for sea depth reference
- ±0.2% FSO accuracy
- Operating ranges to 10K PSI (689 BAR)

#### APPLICATIONS:

- ROV
- AUV
- Submarine
- Oil & gas subsea wellhead control systems

# GP:50 MODEL 7500-M254

## REFERENCE SPECIFICATIONS

(Standard configurations shown, consult factory for other options)

ELECTRICAL	
Output Signal:	4-20 mA Optional mV/V or 0 to 5 Vdc
Excitation Voltage:	9 to 36 Vdc

MATERIALS OF CONSTRUCTION	
Wetted Parts:	Inconel 718
Housing:	316L Stainless Steel

ACCURACY (RSS): Hysteresis, Non-Linearity & Repeatability @ + 70 °F	
Standard:	±0.2% FSO
Effects on Zero & Span:	±0.5% FSO/100 °F

MECHANICAL	
Process Connection:	SAE AS4320-04 (M) (7/16-20 UNF)
Electrical Connection:	High-temperature solder J-hook connection
Proof Pressure:	2X range
Burst Pressure:	3X range
Approximate Weight:	0.3 lb (127 gm)

PRESSURE RANGES	
500 PSI to 10K PSI (34 to 689 BAR)	

THERMAL SPECIFICATIONS	
Operating Range:	-20 °F to +190 °F (-29 °C to +88 °C)
Compensated Range:	+35 °F to +170 °F (+1.7 °C to +77 °C)
Storage Ambient:	-65 °F to 250 °F (-54 °C to +121 °C)*
*Condensation-free environment	

# GP:50

WASTE WATER SUBMERSIBLES

