



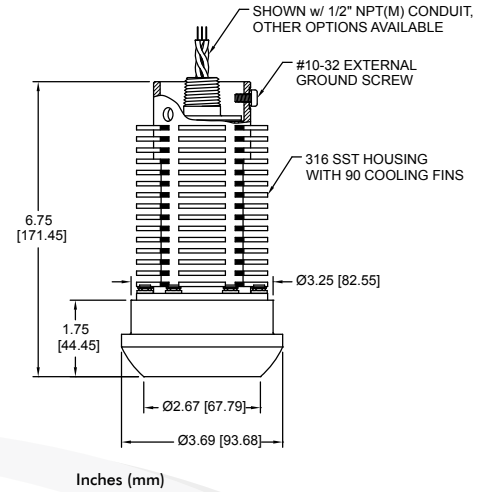
MODEL 170/270/370 QX

HIGH-PRESSURE HIGH TEMPERATURE (HPHT) WECO® UNION PRESSURE TRANSMITTER



STANDARD WIRING

WIRE	MODEL 170QX	MODEL 270QX	MODEL 370QX
A/1/RED	+EXC	+EXC	+EXC/SIG
B/2/BLK	-EXC	-EXC	-EXC/SIG
C/3/BLU	+SIG	+SIG	+SHUNT (ALT)
D/4/WHT	-SIG	-SIG	N/C
E/5/ORG	+SHUNT (OPT)	+SHUNT (OPT)	+SHUNT (OPT)
F/6/BRN	-SHUNT (OPT)	-SHUNT (OPT)	-SHUNT (OPT)
G/7/GRN	CASE GND	CASE GND	CASE GND



**REF DIMENSIONS ONLY.
CONSULT FACTORY FOR ACTUAL DIMENSIONS.**



PRODUCT OVERVIEW:

GP:50's Model 370-QX series is designed for High Pressure High Temperature (HPHT) well applications. This series is designed to fit the standard WECO® 2"- 1502 or 2"- 2002/2202 unions and operates at a continuous process temperature to +350 °F (+177 °C). It offers reliable service in high shock and vibration applications such as cementing, fracturing and drilling mud pressure measurement.

FEATURES:

- 2"-1502, 2002 and 2202 WECO® Union compatible
- Process temperature rated to +350 °F (+177 °C)
- 0 to 5K thru 0 to 20K PSI (345 thru 1,379 BAR)
- Corrosion resistant materials
- Optional improved accuracy specifications
- Hazardous area location approvals

APPLICATIONS:

- High-pressure, high-temperature (HPHT) wells
- Choke and kill manifolds
- Blowout preventer (BOP)
- Hydraulic fracturing

OPTIONS:

- FM, CSA ATEX, IEC*
- WECO® 2" 1502 or 2" 2002 wing union fitting
- Stainless steel or Inconel X750/ X718 construction
- Shunt calibration signal
- 3 mV/V, 0 to 5 Vdc, 4-20 mA or CANbus output
- Comprehensive list of electrical connections including shipboard rated cable

*For details on available approvals go to:
<https://www.gp50.com/certifications>



GP:50 MODEL 170/270/370 QX

REFERENCE SPECIFICATIONS

(Standard configurations shown, consult factory for other options)

ELECTRICAL	
Output Signal:	(170) 3 mV/V (270) 0 to 5 Vdc (370) 4-20 mA (570) CANbus / SAE J1939
Excitation Voltage:	(170) 15 Vdc max (270) 9 to 36 Vdc (370) 9 to 36 Vdc (10 to 28 Vdc for GI/AI/I approvals)
Load Resistance:	Model 170 >100K Ω Model 270 >10K Ω
Input Current:	(Model 170) 1 mA (Model 270) 8 mA
Circuit Protection:	RFI, EMI and reverse polarity
Shunt Calibration:	(Model 170/270) 100% FSO by shorting 2 pins, non-isolated versions

MATERIALS OF CONSTRUCTION	
Sensor: Wetted Material Selectable	Standard: 17-4 PH (H1025) SST for $\leq 10K$ PSI and Inconel X750 NACE for $\geq 15K$ PSI Optional Inconel 718
Housing:	300 Series Stainless Steel

ACCURACY (RSS): Hysteresis, Non-Linearity & Repeatability @ +70 °F)	
Standard:	$\leq \pm 0.25\%$ FSO
Zero & Span Balance:	$< \pm 1.0\%$ FSO/100 °F

MECHANICAL	
Process Connection:	WECO® 2" - 1502 or 2002/2202
Electrical Connection:	Bendix PTO2E-106P standard
Proof Pressure:	1.5X FSO
Burst Pressure:	3.0X FSO
Ingress Protection	IP67 (some options may affect rating)
Approximate Weight:	6 lb (2.72k)

PRESSURE RANGES	
0 to 5000 PSI thru 0 to 20K PSI (69 thru 1,379 BAR)	

THERMAL SPECIFICATIONS	
Operating Range:	-50 °F to +360 °F (-45 °C to +182 °C)
Compensated Range:	-40 °F to +350 °F (-40 °C to +177 °C)
Storage Ambient:	-60 °F to 190 °F (-51 °C to +87 °C)
Effect on Zero/Span:	$\pm 2.0\%$ FSO/100 °F
Improved or expanded temperature compensation available	

APPROVALS (370 SERIES ONLY)	
FM/CSA/ATEX/IEC Intrinsic Safety	
FM/CSA/ATEX/IEC Zone 2	
CE Marked	

