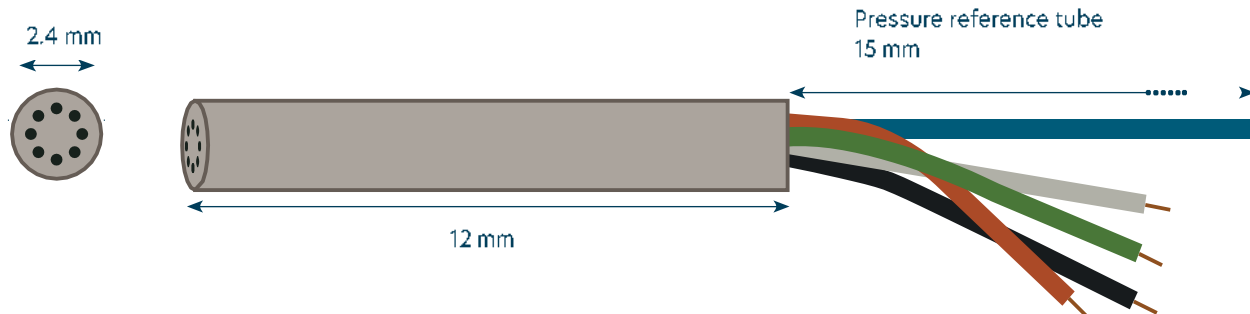


Miniaturised differential pressure sensor

2,4mm up to 100C°

MP-2.40-TIG-YYY-D-ST



MODEL DEFINITION

TIG : Inconel tube with grid is the standard product
YYY : pressure range in psig (005, 015, 030, 080, 150)
D : differential pressure measurement
ST : standard temperature up to 100C°
Options : special tubes (sensor and reference) length, material and grid shape also available on request

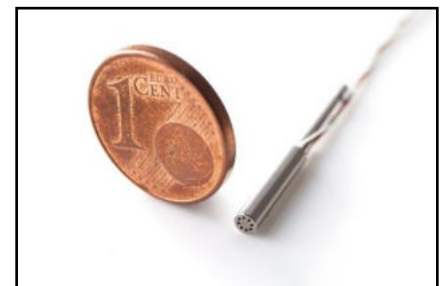
Wire color code

Black	Input -
Red	Input +
White	Output -
Green	Output +

FEATURES

- Reduced size : \varnothing 2.4 mm
- Integrated field shield
- Temperature range : up to 100°C
- Full scale range of 5 to 150 PSI
- Customized solution possible mVolt output
- Highest resonance frequency on the market
- Amplification can be done for a special request

Ideal for dynamic pressure measurement



APPLICATIONS

MEDICAL

- Patient monitor
- Oxygen Concentrators
- Fluid Evacuation

AEROSPACE

- Ideal for Wind Tunnel aerodynamic measurement

INDUSTRIAL

- Industrial Controls
- Compressors & Pumps
- Oil-Filled Package

AUTOMOTIVE

- Diesel Particulate Filter Exhaust Gas Recirculation
- Automotive Systems

Resonance frequency

- Highest resonance frequency of 310 KHz of the market
- The tests have been done on a Polytec MSA-500 using Scanning laser-Doppler vibrometry.

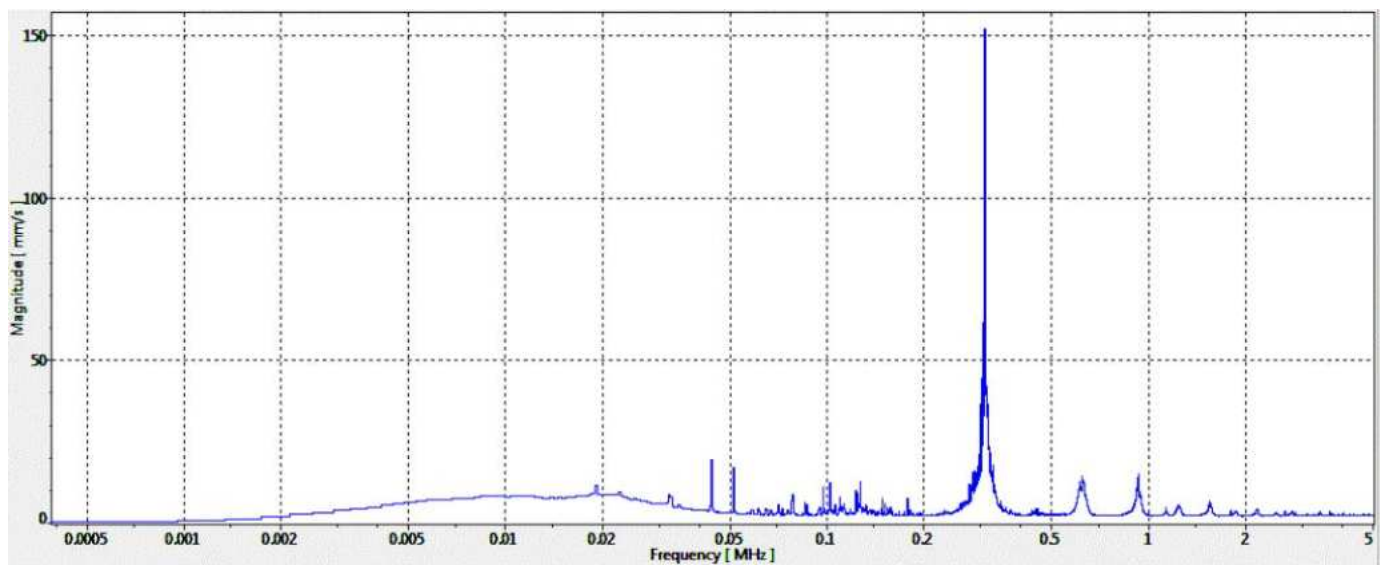


Figure 1: Result for the 30 PSI MEMS differential pressure sensors

PART NUMBER

MP-2.40-TIG-YYY-D-ST

Pressure Range	Proof Pressure	Burst Pressure
0 → 5 PSIG	25 PSI	40 PSI
0 → 15 PSIG	45 PSI	75 PSI
0 → 30 PSIG	90 PSI	150 PSI
0 → 80 PSIG	240 PSI	320 PSI
0 → 150 PSIG	300 PSI	450 PSI

Characteristic		Minimum	Typical	Maximum	Unit
Span ⁴	0 → 5 PSIG	60	90	120	mV
	0 → 15 PSIG	55	80	105	
Zero Offset		-45	-10	25	mV
Bridge Resistance (RB)		4	5	6	kΩ
Pressure Hysteresis (d) ¹		-	<±0.1	-	%/FS
Thermal Hysteresis (d,f)		-	<±0.2	-	%/FS
Operating Temperature ²		-	-	+100	°C
Max Excitation Voltage		-	-	10	V
TC Span ³		-0.24	-0,19	-0.155	%/°C
TC Zero Offset ³		-75	-	75	μV/°C
TC Resistance ³		0.24	0.275	0.33	%/°C
Linearity - Topside ¹		-0.15	<±0.10	0.15	%/FS
Linearity - Backside	5 PSI	-0.3	<±0.2	0.3	%FS
	15, 30, 80, 150 PSI	-0.15	<±0.10	0.15	

Remark:

- All sensors are provided with a control sheet given pressure level versus mVolt @25C° under a supply voltage of 5 Volt.
- Temperature measurement/compensation available. [See our tutorial on our website.](#)
- Conditioning system on request.
- Frequency > 300 KHz under vacuum condition.
- High robustness: specific protection on wire bonding @MEMS level (protection against particles, dust, condensation...) without impact on frequency measuring range.

¹ Accuracy @25 Celsius ; ² TMCL qualification tests - JEDEC JESD22-A104 « temperature cycling » @ Tmax ; ³ @MEMS level; ⁴ Amplification can be done for a special request

CONTACT

Operational Headquarter: The Labs, Liège Science Park, Rue Bois Saint-Jean 15/1, B-4102 Seraing, BELGIUM

TEL: +32 4 353 30 14

Email: sales@sensorade.be