

5355 SOLID FLANGE REACTION TORQUE TRANSDUCER (U.S. & METRIC)

FEATURES & BENEFITS

- Threaded mounting holes
- Compact size
- Optional ± 10 VDC output available on 100 ozf-in (0.71 Nm) and above

STANDARD CONFIGURATION



Model 5355 (Shown)

SPECIFICATIONS

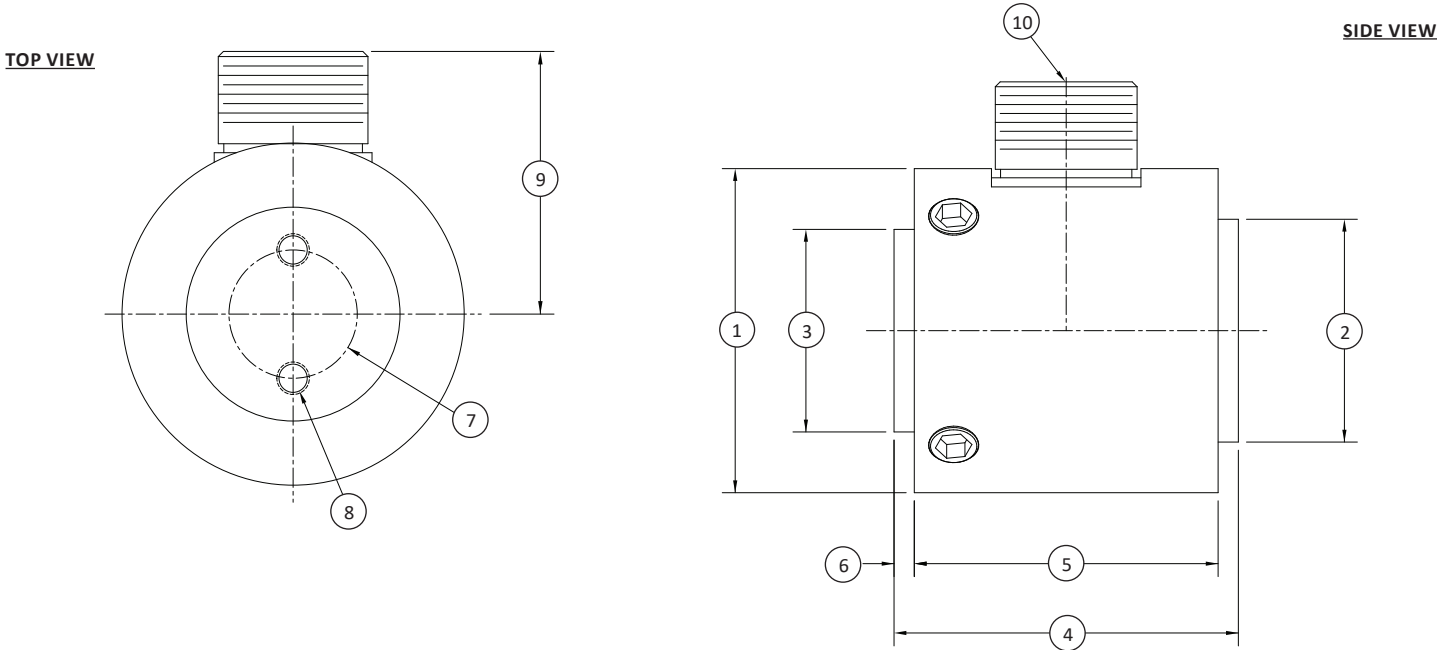
ACCURACY – (MAX ERROR)		
Nonlinearity – %FS		± 0.1
Hysteresis – %FS		± 0.1
Nonrepeatability – %RO		± 0.05
TEMPERATURE		
Compensated Range	$^{\circ}\text{F}$	+75 to +175
	$^{\circ}\text{C}$	+24 to +80
Operating Range	$^{\circ}\text{F}$	-65 to +225
	$^{\circ}\text{C}$	-54 to +107
Effect on Output – % / deg	$^{\circ}\text{F}$	± 0.002
Effect on Zero – %RO / deg	$^{\circ}\text{F}$	± 0.002
ELECTRICAL		
Rated Output – mV/V (Nominal)	10 ozf-in	2.0
	0.07 Nm	1.3
Bridge Resistance – Ohm (Nominal)		350
Excitation Voltage – VDC MAX		10
MECHANICAL		
Calibration		CW & CCW
Safe Overload – %CAP		200
Material	10 - 500 lbf-in	Aluminum
	1K - 100K lbf-in	Stainless steel

PERFORMANCE PARAMETERS

CAPACITY		TORQUE OVERLOAD		TORSIONAL STIFFNESS (FROM FLANGE FACE-TO-FACE)		WEIGHT		MAX THRUST LOAD		MAX BENDING TORQUE		MAX SHEAR LOAD	
lbf-in	Nm	lbf-in	Nm	lbf-in/rad	Nm/rad	lbs	kg	lbf	N	lbf-in	Nm	lbf	N
20	2.26	40	4.52	1.8K	203	0.5	0.2	80	356	20	2.26	20	89
50	5.65	100	11.3	7.4K	836			200	890	50	5.65	50	222
100	11.3	200	22.6	13.4K	1,510	1.2	0.5	100	445	50	5.65	50	222
200	22.6	400	45.2	37.5K	4,240			200	890	100	11.3	100	445
500	56.5	1K	113	145K	16.4K			500	2,24K	250	28.2K	250	1.11K
1K	113	2K	226	270K	30.5K	8	4	1K	4.45K	500	56.5	500	2.24K
2K	226	4K	452	775K	87.6K			2K	8.9K	1K	113	1K	4.45K
5K	565	10K	1.13K	3000K	339K			5K	22.2K	2.5K	282	2.5K	11.1K
10K	1.13K	20K	2.26K	2000K	226K	20	9	10K	44.5K	5K	565	5K	22.2K
20K	2.26K	40K	4.52K	5000K	565K			20K	89K	10K	1.13K	10K	44.5K
50K	5.65K	100K	11.3K	13000K	1470K	41	19	50K	222K	25K	2.82K	25K	111K
100K	11.3K	200K	22.6K	33000K	3730K	42	19	100K	445K	50K	5.65K	50K	222K

International System of Units (SI) dimensions and capacities are provided for conversion only. Standard products have U.S. capacities and dimensions. SI capacities available upon special request and at an additional cost.

5355 SOLID FLANGE REACTION TORQUE TRANSDUCER (U.S. & METRIC)



DIMENSIONS

See Drawing	CAPACITY									
	U.S. (lbf-in)	Metric (Nm)	U.S. (lbf-in)	Metric (Nm)	U.S. (lbf-in)	Metric (Nm)	U.S. (lbf-in)	Metric (Nm)	U.S. (lbf-in)	Metric (Nm)
	in	mm	in	mm	in	mm	in	mm	in	mm
(1)	20, 50	2.26, 5.65	100, 200, 500	11.3, 22.6, 56.5	1K, 2K, 5K	113, 226, 565	10K, 20K	1.13K, 2.26K	50K, 100K	5.65K, 11.3K
(2)	2.00	50.8	2.75	69.85	4.50	114.3	6.00	152.4	8.00	203.2
(3)	1.375	34.93	2.000	50.8	3.875	98.43	5.375	136.5	7.375	187.3
(4)	1.250	31.75	1.875	47.63	3.750	95.25	5.25	133.4	7.250	184.2
(5)	2.125	53.98	2.75	69.85	3.50	88.9	4.50	114.3	5.50	139.7
(6)	1.875	47.63	2.375	60.33	3.00	76.2	3.75	95.25	4.75	120.7
(7)	0.125	3.175	0.188	4.775	0.25	6.35	0.375	9.525	0.375	9.525
(8)	0.750	19.05	1.250	31.75	2.750	69.85	4.000	101.6	5.750	146.1
(8)	#10-32 UNF-2B – 2 places		¼-20 UNC-2B – 4 places		⅜-24 UNF-2B – 4 places		⅝-20 UNF-2B – 8 places		⅞-18 UNF-2B – 12 places	
	↓ 0.25	↓ 6.4	↓ 0.38	↓ 9.7	↓ 0.50	↓ 12.7	↓ 0.62	↓ 15.7	↓ 0.75	↓ 19.1
(9)	1.563	39.7	1.938	49.2	2.813	71.4	3.625	92.1	4.656	118.3
(10)	MS3102A-14S-6P		MS3102A-14S-6P		MS3102A-14S-6P		MS3102A-14S-6P		MS3102A-14S-6P	